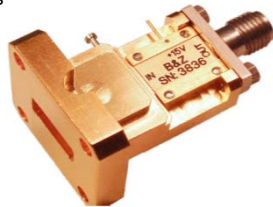


Features

- Noise Figure ≤ 2.0 dB
- Unconditionally Stable at all temperatures
- Internally Regulated DC Voltage
- 50 Ohm Matched Input/Output
- Field Replaceable 2.92mm K connectors
- Excellent Group Delay and Phase Linearity
- 0.009 inches diameter RF In/Out feed through
- Operating Temp. -55 C to +85 C
- 3 Year Warranty

Options

- **Optimized Performance over Selected Bandwidth**
- Internally DC Block Input (Output DC Block Standard)
- Hermetically Sealed Package
- Improved Gain Flatness
- Improved IN and OUT VSWR
- Gain and Phase matching
- Lower Noise Figure

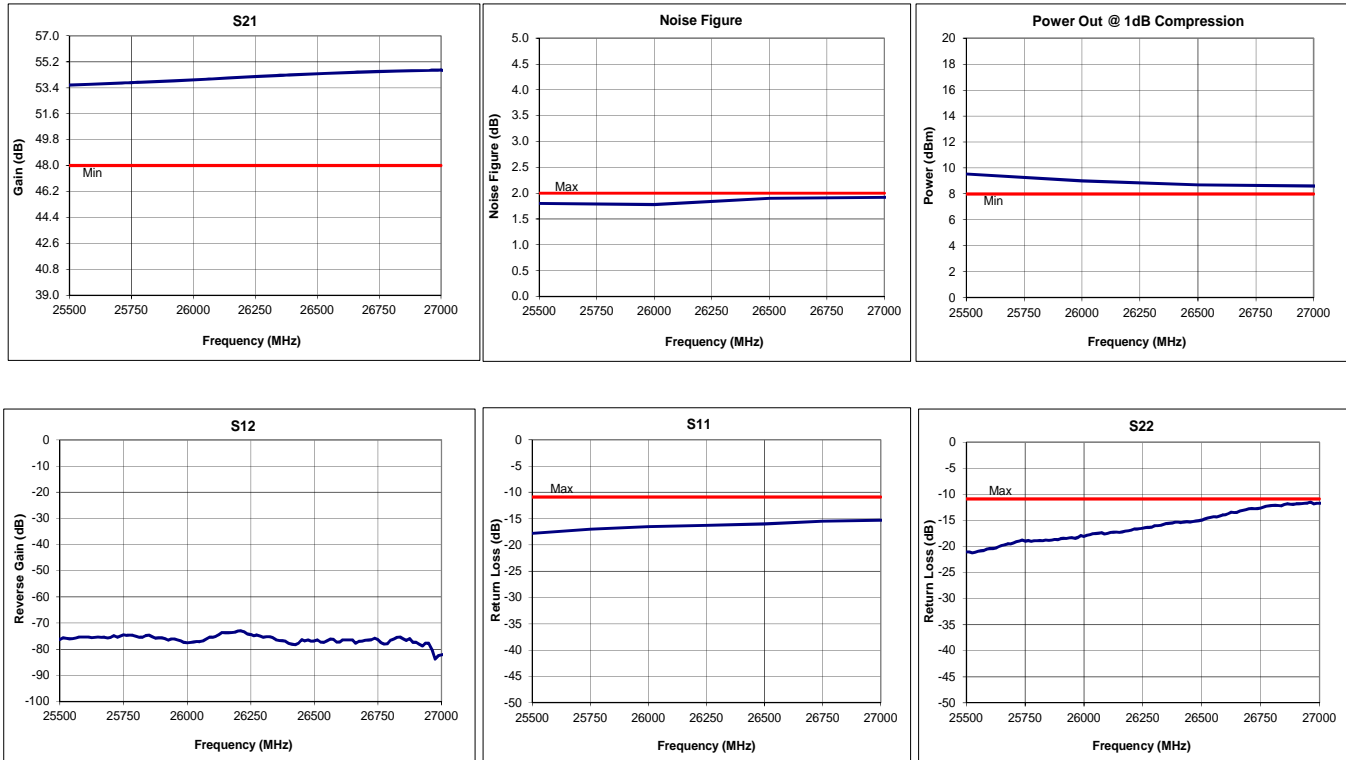


Specifications (23 °C)

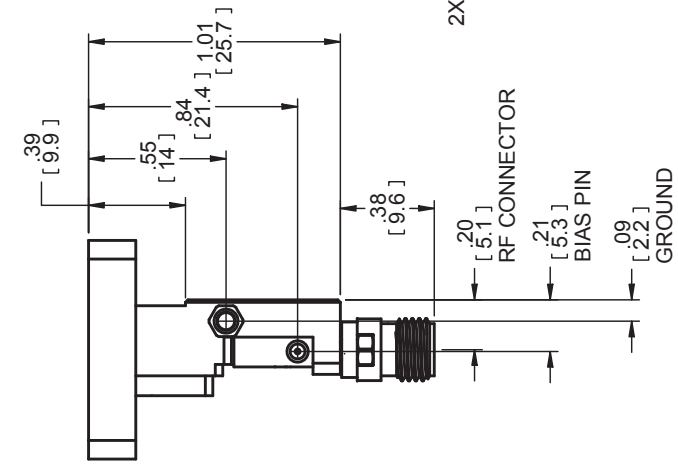
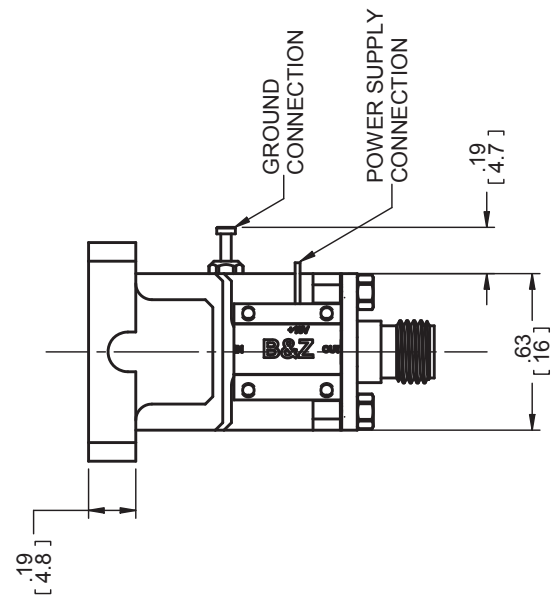
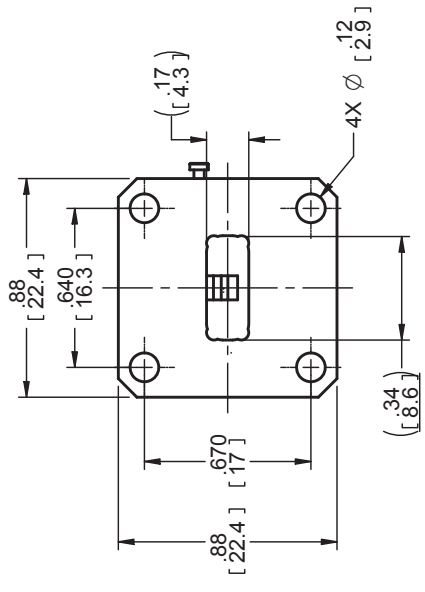
Parameter	Min	Typ	Max	Units
Frequency Range	25.5	-	27	GHz
Noise Figure*	-	-	2	dB
Gain	48	-	-	dB
Gain Flatness (+/-)	-	-	± 1.8	dB
P1 Output Power	+8	-	-	dBm
Input VSWR	-	-	1.8:1	
Output VSWR	-	-	1.8:1	
Operating Temperature	-55	-	+85	°C
Non-Operating Temp Range	-65	-	+125	°C
RF Input Power (no-damage)	-	-	+13	dBm
Humidity (non-condensing)	-	-	95	%
Voltage	+12	+12	+15	VDC
Current	-	175		mA
Input Impedance	50			Ohms
RF Connector/ Input	WR-34 Waveguide			
RF Connector/ Output	2.92 mm K Female			
Dimensions	35.3 x 22.4 x 22.4			mm

* Noise Source used for measurement from 18GHz to 42 GHz is HP346C-K01.
NF Uncertainty (approx. 0.3 dB). 0.2 dB due to ENR of HP 346C-K01, and 0.1 dB due to the gain modulation of the unit caused by the HP 346C-K01 source impedance change in the ON and OFF state.

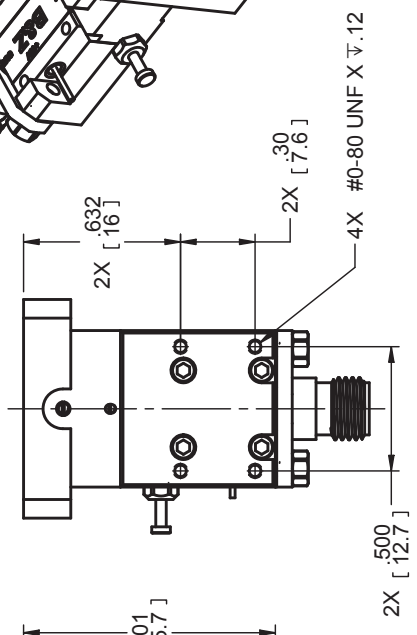
Typical Data



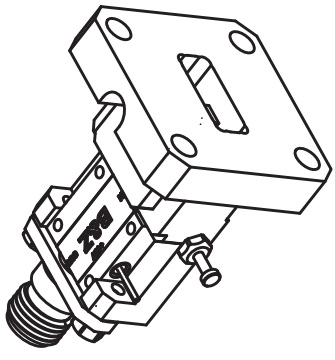
REVISION HISTORY		
REV	DESCRIPTION	DATE



CUSTOMER MOUNTING HOLES



ISOMETRIC VIEW



B&Z TECHNOLOGIES		REV	A
STONY BROOK, NEW YORK 11790		SIZE	100170
TITLE		DWG NO	100170
		SCALE	100170
		FILE NAME	100170 A_Outline_WR34.dft
		UNLESS OTHERWISE SPECIFIED	
		DIMENSIONS ARE IN INCHES	
		ANGLES ±0.5°	
		2 PL ±0.01 3 PL ±0.005	
		WEIGHT: ~50g	
		SHEET 1 OF 1	