

**Features**

- Noise Figure  $\leq 2.0$  dB
- Unconditionally Stable at all temperatures
- Internally Regulated DC Voltage
- 50 Ohm Matched Input/Output
- Weatherproof Housing
- Excellent Group Delay and Phase Linearity
- 0.009 inches diameter RF In/Out feed through
- Operating Temp. -55 C to +85 C
- 3 Year Warranty

**Options**

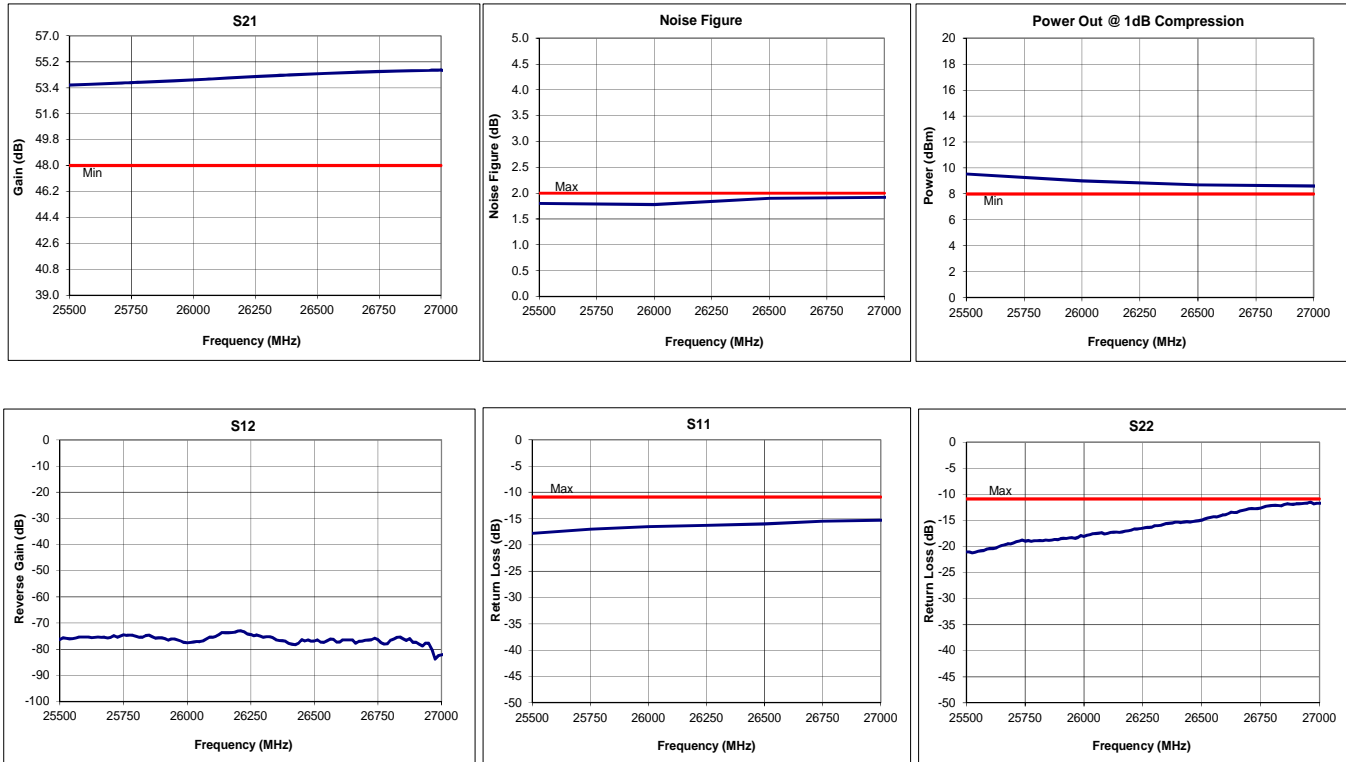
- **Optimized Performance over Selected Bandwidth**
- Internally DC Block Input (Output DC Block Standard)
- Hermetically Sealed Package
- Improved Gain Flatness
- Improved IN and OUT VSWR
- Gain and Phase matching
- Lower Noise Figure

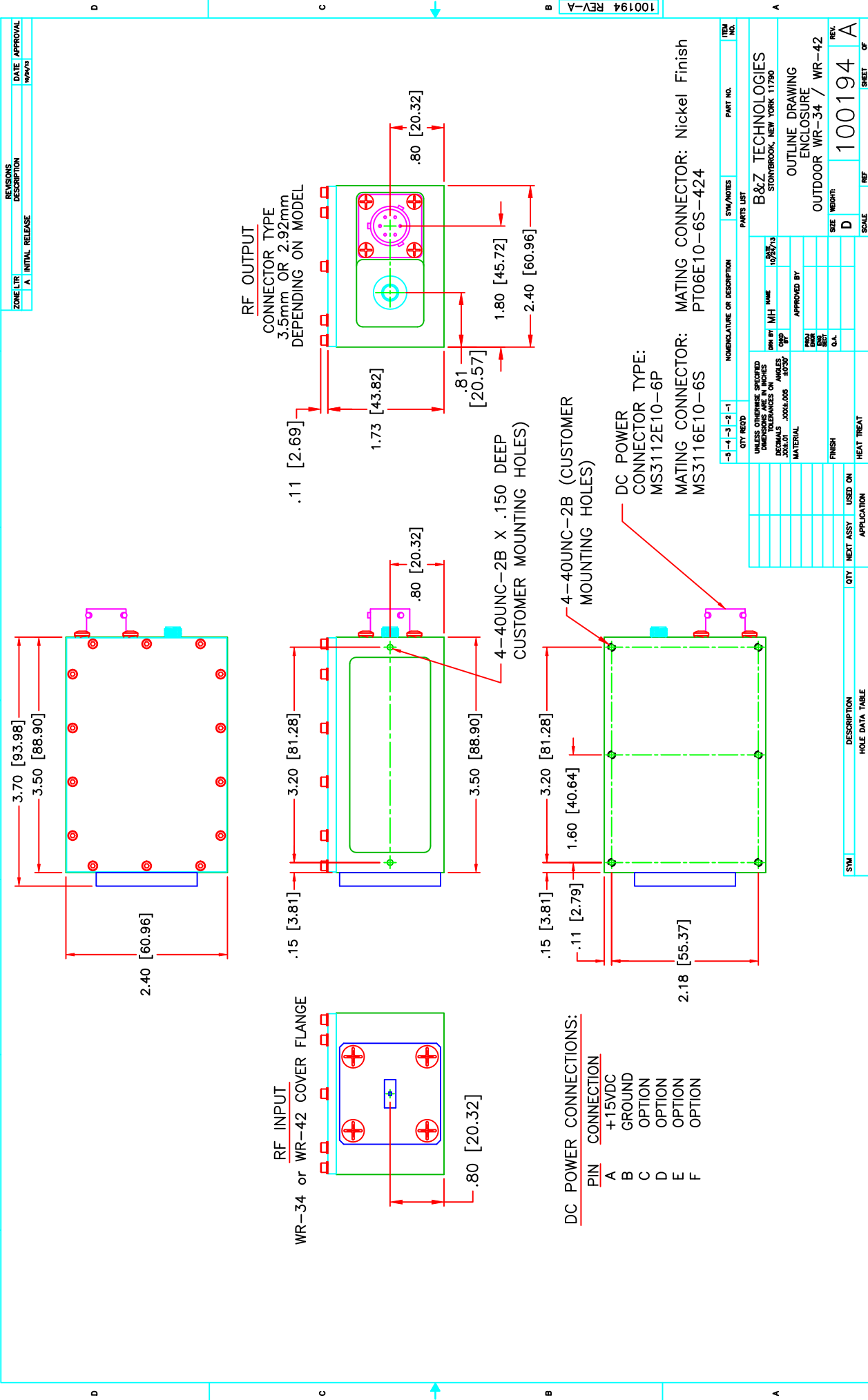
**Specifications (23 °C)**

Parameter	Min	Typ	Max	Units
Frequency Range	25.5	-	27	GHz
Noise Figure*	-	-	2	dB
Gain	48	-	-	dB
Gain Flatness (+/-)	-	-	$\pm 1.8$	dB
P1 Output Power	+8	-	-	dBm
Input VSWR	-	-	1.8:1	
Output VSWR	-	-	1.8:1	
Operating Temperature	-55	-	+85	°C
Non-Operating Temp Range	-65	-	+125	°C
RF Input Power (no-damage)	-	-	+13	dBm
Humidity (non-condensing)	-	-	95	%
Voltage	+12	+12	+15	VDC
Current	-	175		mA
Input Impedance	50			Ohms
RF Connector/ Input	WR-34 Waveguide			
RF Connector/ Output	2.92 mm K Female			
Dimensions	93.98 x 60.96 x 43.82			mm

\* Noise Source used for measurement from 18GHz to 42 GHz is HP346C-K01.  
NF Uncertainty (approx. 0.3 dB). 0.2 dB due to ENR of HP 346C-K01, and 0.1 dB due to the gain modulation of the unit caused by the HP 346C-K01 source impedance change in the ON and OFF state.

**Typical Data**





ZONE/LTR	REVISIONS DESCRIPTION	DATE	APPROVAL
A	INITIAL RELEASE	09/24/13	

100194 REV-A

QTY	REQD	QTY	REQD	QTY	REQD	QTY	REQD
-5	-4	-3	-2	-1			

UNLESS OTHERWISE SPECIFIED DIMENSIONS ARE IN INCHES DECIMALS TOLERANCES OR ANGLES ARE AS SHOWN

**PARTS LIST**

SYMBOL	DESCRIPTION	QTY	NEXT ASSY	USED ON	APPLICATION
	ENCLOSURE				

**FINISH**

FINISH	HEAT TREAT

**APPROVED BY:**

DESIGNER	DATE	APPROVED BY	DATE

**SYMBOL**

SYMBOL	DESCRIPTION	QTY	NEXT ASSY	USED ON	APPLICATION
	HOLE DATA TABLE				

**SCALE**

SCALE	REF	SHEET	OF
D		100194	1

QTY	REQD	QTY	REQD	QTY	REQD	QTY	REQD
-5	-4	-3	-2	-1			

**UNLESS OTHERWISE SPECIFIED DIMENSIONS ARE IN INCHES DECIMALS TOLERANCES OR ANGLES ARE AS SHOWN**

**PARTS LIST**

SYMBOL	DESCRIPTION	QTY	NEXT ASSY	USED ON	APPLICATION
	ENCLOSURE				

**FINISH**

FINISH	HEAT TREAT

**APPROVED BY:**

DESIGNER	DATE	APPROVED BY	DATE

**SYMBOL**

SYMBOL	DESCRIPTION	QTY	NEXT ASSY	USED ON	APPLICATION
	HOLE DATA TABLE				

**SCALE**

SCALE	REF	SHEET	OF
D		100194	1

B&Z TECHNOLOGIES  
STONEBROOK, NEW YORK 11790

OUTLINE DRAWING  
ENCLOSURE  
OUTDOOR WR-34 / WR-42

REV: 100194