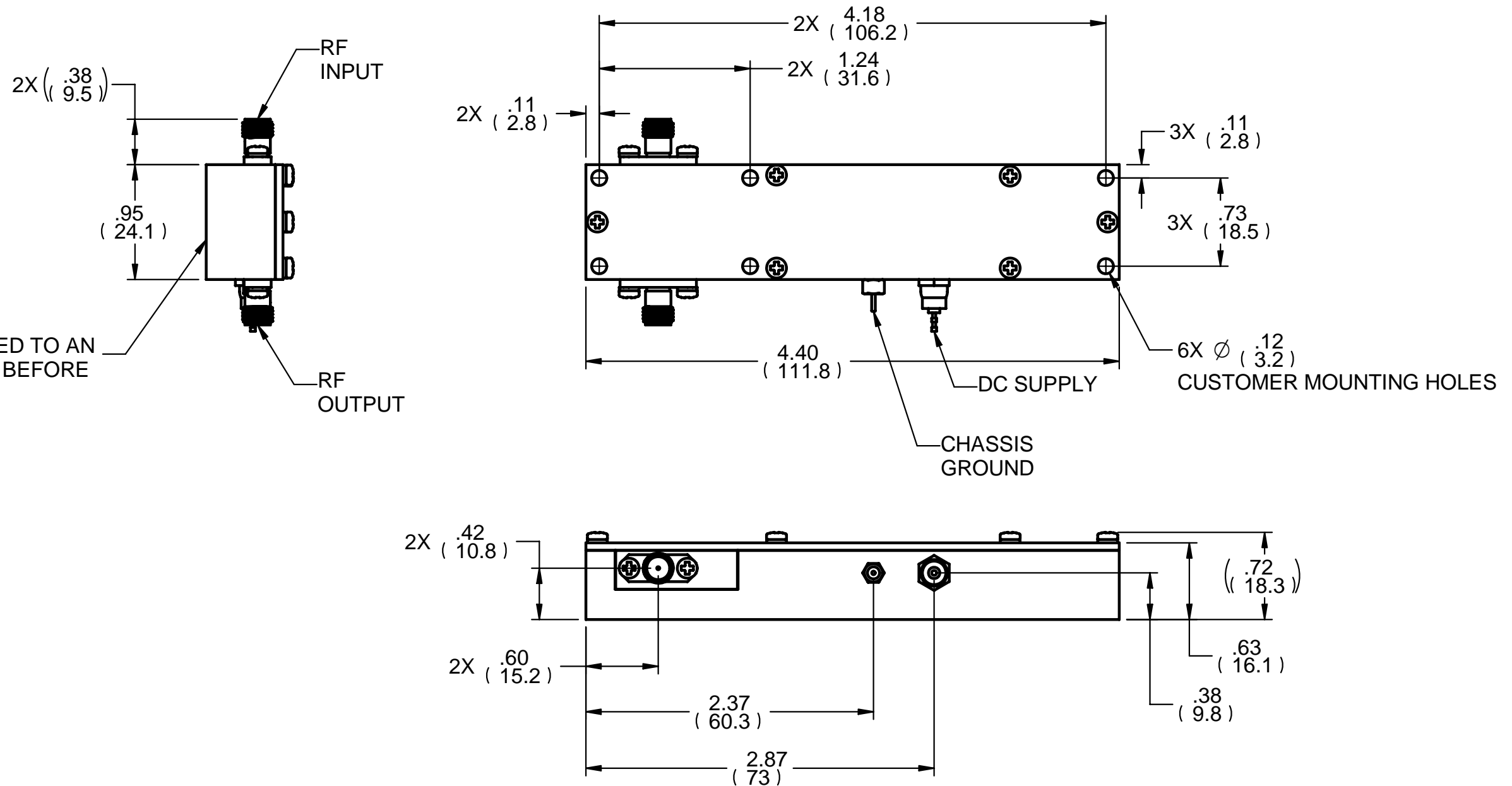


REVISION HISTORY			
REV	DESCRIPTION	DATE	APPROVED
A	INITIAL RELEASE	APR 1, 07	J.S.



MOUNTING SURFACE.
UNIT MUST BE MOUNTED TO AN
ADEQUATE HEAT SINK BEFORE
APPLYING POWER

NOTES:

1. HEAT SINK REQUIRED.
2. MOUNTING SURFACE SHOULD BE FLAT .002 INCH / INCH.
3. STANDARD ESD PRECAUTIONS NEED TO BE OBSERVED.

	NAME	DATE	B&Z TECHNOLOGIES		
DRAWN	Dan S.	04/02/07	STONY BROOK, NEW YORK 11790		
CHECKED			TITLE		
ENG APPR			OUTLINE		
MGR APPR			POWER MODULE, OUTPUT		
UNLESS OTHERWISE SPECIFIED DIMENSIONS ARE IN INCHES ANGLES $\pm X.X^\circ$ 2 PL $\pm X.XX$ 3 PL $\pm X.XXX$			SIZE	DWG NO	REV
			B	100110	A
			FILE NAME: 100110 A OUTLINE, POWER MODULE, OUTPUT.dft		
SCALE:		WEIGHT:		SHEET 1 OF 1	