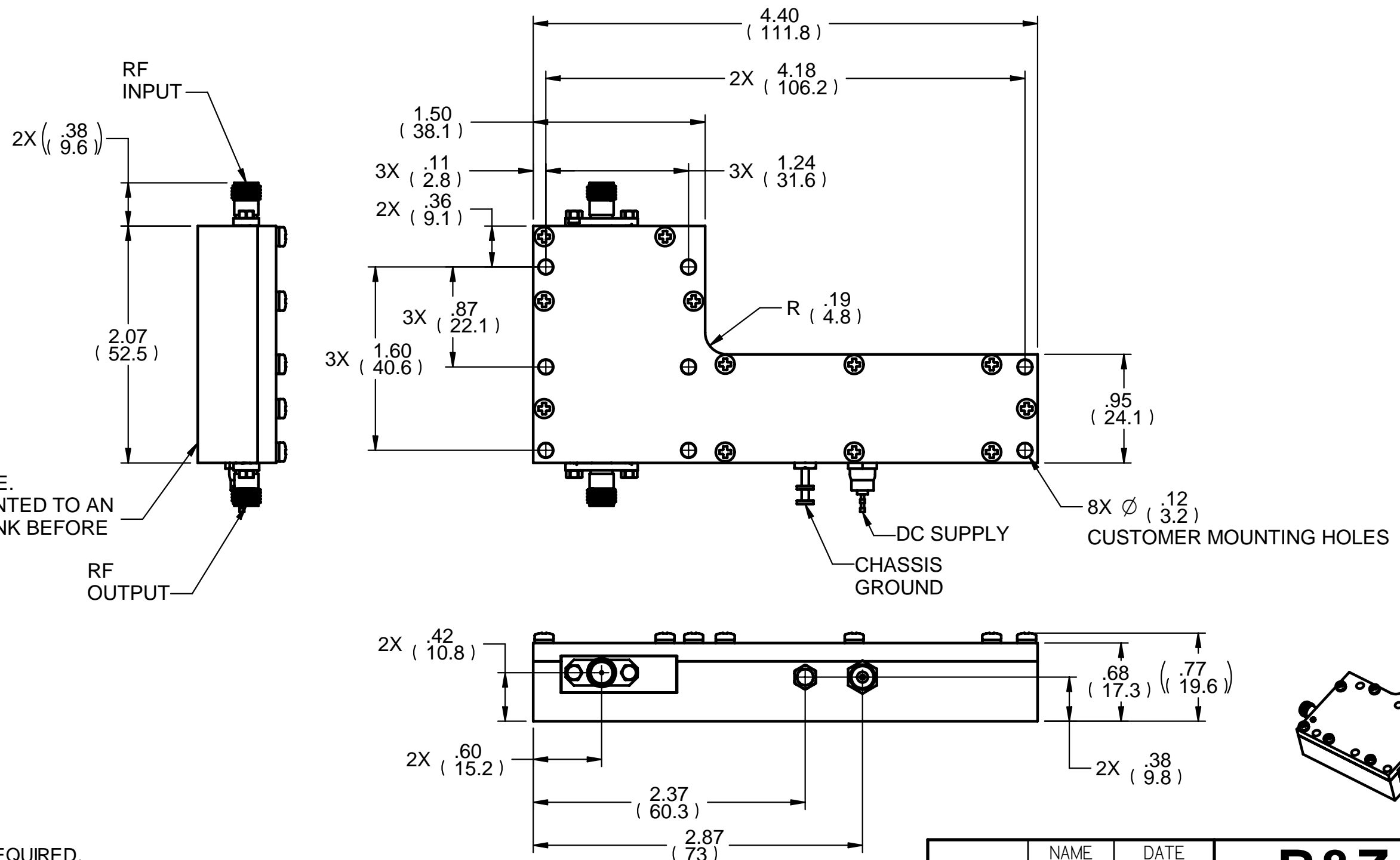



| REVISION HISTORY | | | |
|------------------|-----------------|------------|----------|
| REV | DESCRIPTION | DATE | APPROVED |
| A | INITIAL RELEASE | APR 26, 07 | J.S. |



MOUNTING SURFACE.
UNIT MUST BE MOUNTED TO AN
ADEQUATE HEAT SINK BEFORE
APPLYING POWER

NOTES:

1. HEAT SINK REQUIRED.
2. MOUNTING SURFACE SHOULD BE FLAT .002 INCH / INCH.
3. STANDARD ESD PRECAUTIONS NEED TO BE OBSERVED.

| | | | |
|--|---------|--------------|--|
| | NAME | DATE |  STONY BROOK, NEW YORK 11790 |
| DRAWN | Dan S. | 04/26/07 | |
| CHECKED | | | |
| ENG APPR | | | |
| MGR APPR | | | TITLE |
| UNLESS OTHERWISE SPECIFIED DIMENSIONS ARE IN INCHES ANGLES $\pm 0.5^\circ$ 2 PL ± 0.01 3 PL ± 0.005 | | | OUTLINE |
| | | | POWER MODULE, PREAMPLIFIED |
| SIZE | DWG NO | REV | |
| B | 100116 | A | |
| FILE NAME: 100116 A OUTLINE, POWER MODULE, PREAMPLIFIED.dft | | | |
| SCALE: | WEIGHT: | SHEET 1 OF 1 | |

